

SYSTE A Wall Brackets

Aluminum Flex L-brackets

With **one** back perforation for all common anchoring surfaces.
Alloy EN AW-6063 T66.

- | | |
|---|--|
| <ul style="list-style-type: none"> • Back (W)
40 resp. 43 mm • Protrusion (A)
40-320 mm • Material thickness (M)
3 mm + 4 mm • Height 85 mm (H) | <ul style="list-style-type: none"> • Back (W)
40 resp. 43 mm • Protrusion (A)
40-320 mm • Material thickness (M)
3 mm + 4 mm • Height 180 mm (H) |
|---|--|

	W/A/M-H	W/A/M-H
AFH0	40/40/3-85 mm	40/40/3-180 mm
AFH1	40/60/3-85 mm	40/60/3-180 mm
AFH2	40/80/3-85 mm	40/80/3-180 mm
AFH3	40/100/3-85 mm	40/100/3-180 mm
AFH4	40/120/3-85 mm	40/120/3-180 mm
AFH5	40/140/3-85 mm	40/140/3-180 mm
AFH6	40/160/3-85 mm	40/160/3-180 mm
AFH7	40/180/3-85 mm	40/180/3-180 mm
AFH8	40/200/4/3-85 mm	40/200/4/3-180 mm
AFH8,5	40/210/4-85 mm	40/210/4-180 mm
AFH9	40/220/4/3-85 mm	40/220/4/3-180 mm
AFH9,5	40/230/4/3-85 mm	40/230/4/3-180 mm
AFH10	43/240/4/3-85 mm	43/240/4/3-180 mm
AFH11	43/260/4/3-85 mm	43/260/4/3-180 mm
AFH12	43/280/4/3-85 mm	43/280/4/3-180 mm
AFH13	43/300/4/3-85 mm	43/300/4/3-180 mm
AFH14	43/320/4/3-85 mm	43/320/4/3-180 mm

Aluminum U-brackets

Available with back perforation for all common anchoring surfaces.
Alloy EN AW-6063 T66.

- | | |
|--|---|
| <ul style="list-style-type: none"> • Protrusion (A)
40-180* mm • Back (W)
55 resp. 57 mm • Height (H) 70 mm • Material thickness (M)
in mm
a/b/a | <ul style="list-style-type: none"> • Protrusion (A)
40-180* mm • Back (W)
55 resp. 57 mm • Height (H) 160 mm • Material thickness (M)
in mm
a/b/a |
|--|---|



	A/W/A-H	a/b/a	A/W/A-H
AUH 0	40/55/40-70	2/3.5/2	40/55/40-160
AUH 1	60/55/60-70	2/5/2	60/55/60-160
AUH 2	80/55/80-70	2/5/2	80/55/80-160
AUH 3	100/55/100-70	2/5/2	100/55/100-160
AUH 4	120/55/120-70	2/5/2	120/55/120-160
AUH 4,5	135/57/135-70	3/5/3	135/57/135-160
AUH 5,5	150/57/150-70	3/5/3	150/57/150-160
AUH 7	180/57/180-70	3/5/3	180/57/180-160

* larger protrusions available on request

Stainless steel L-brackets

With back perforation 10.5 x 15 mm or 6.6 x 15 mm.
Material EN 1.4162

- | | |
|---|--|
| <ul style="list-style-type: none"> • Wall back (W)
43 mm • Protrusion (A)
120-400 mm • Material thickness (M)
1.7 mm • Height (H) 70 mm | <ul style="list-style-type: none"> • Wall back (W)
43 mm • Protrusion (A)
120-400 mm • Material thickness (M)
1.7 mm • Height (H) 150 mm |
|---|--|

	W/A/M-H	W/A/M-H
EH 4	43/120/1.7-70	43/120/1.7-150
EH 5	43/140/1.7-70	43/140/1.7-150
EH 6	43/160/1.7-70	43/160/1.7-150
EH 7	43/180/1.7-70	43/180/1.7-150
EH 8	43/200/1.7-70	43/200/1.7-150
EH 9	43/220/1.7-70	43/220/1.7-150
EH 10	43/240/1.7-70	43/240/1.7-150
EH 11	43/260/1.7-70	43/260/1.7-150
EH 12	43/280/1.7-70	43/280/1.7-150
EH 13	43/300/1.7-70	43/300/1.7-150
EH 14	43/320/1.7-70	43/320/1.7-150
EH 15	43/340/1.7-70	43/340/1.7-150
EH 16	43/360/1.7-70	43/360/1.7-150
EH 17	43/380/1.7-70	43/380/1.7-150
EH 18	43/400/1.7-70	43/400/1.7-150

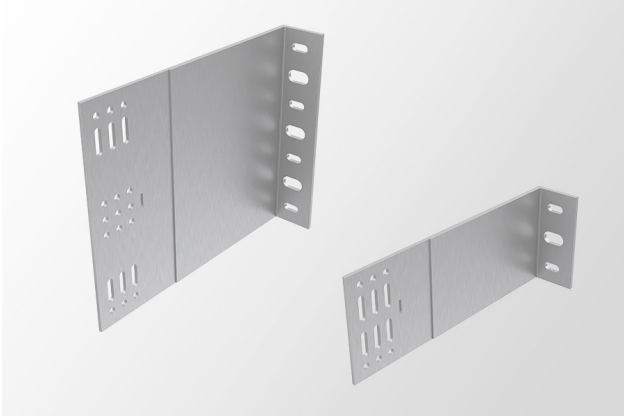
Stainless steel U-brackets

With back perforation 10.5 x 15 mm or 6.6 x 15 mm.
Material EN 1.4404

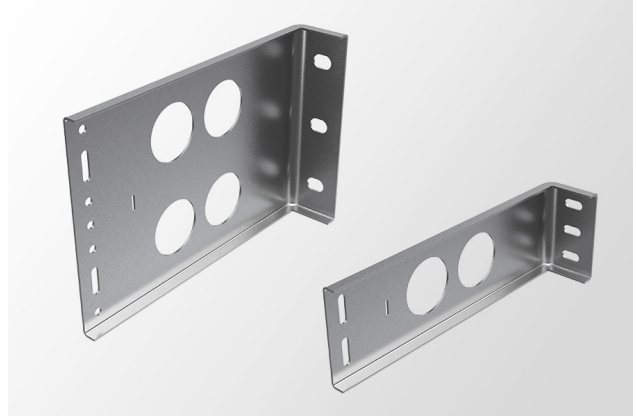
- | | |
|--|---|
| <ul style="list-style-type: none"> • Protrusion (A)
60-300 mm • Wall back (W)
56 mm • Height (H) 70 mm • Material thickness (M)
2.5 mm | <ul style="list-style-type: none"> • Protrusion (A)
60-300 mm • Wall back (W)
56 mm • Height (H) 150 mm • Material thickness (M)
2.5 mm |
|--|---|

	A/W/A-H	A/W/A-H
EUH 1	60/56/60-70	60/56/60-150
EUH 2	80/56/80-70	80/56/80-150
EUH 3	100/56/100-70	100/56/100-150
EUH 4	120/56/10-70	120/56/120-150
EUH 5	140/56/140-70	140/56/140-150
EUH 6	160/56/160-70	160/56/160-150
EUH 7	180/56/180-70	180/56/180-150
EUH 8	200/56/200-70	200/56/200-150
EUH 9	220/56/220-70	220/56/200-150
EUH 10	240/56/240-70	240/56/240-150
EUH 11	260/56/260-70	260/56/260-150
EUH 12	280/56/280-70	280/56/280-150
EUH 13	300/56/300-70	300/56/300-150

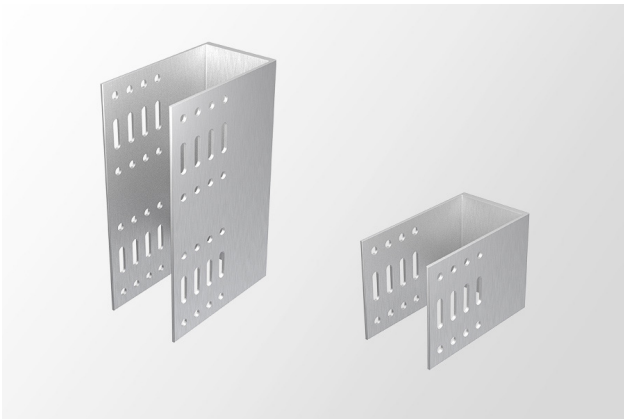
SYSTEA Wall Brackets



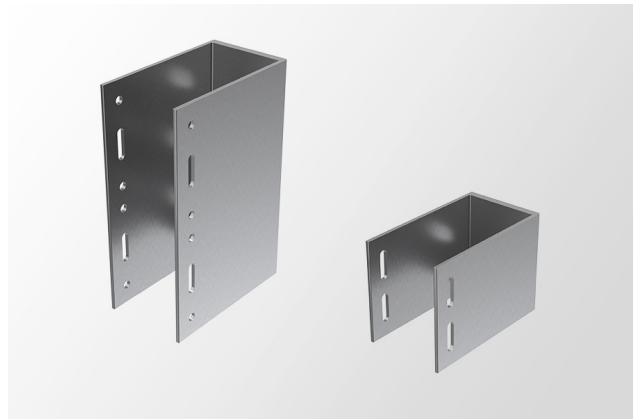
Aluminum *Flex* L-brackets



Stainless steel L-brackets



Aluminum U-brackets



Stainless steel U-brackets

SYSTEA system advantages at a glance



Allow highest energy efficiency up to passive house standard



Meet the highest static requirements



Dimensional accuracy of all components



Non-combustible material



Sturdy lightweight high quality aluminum



Most sophisticated facade designs possible



Highly cost efficient systems



Corrosion resistant and particularly durable



Fixed and sliding points provide secure hold